

Benefits:

Annual (up to 104 hours per year, increases with tenure)

Sick Leave (104 hours per year)

Telework Options

Health Insurance



Dental Insurance

Vision Insurance

Life Insurance

Retirement Savings

Annuity Supplement

Long-Term Care Insurance



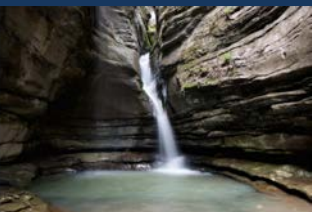
Federal Holidays

Compensatory Time

Flexible Spending Accts

12 Weeks Paid Parental

Leave (after 1 year)



Click here to view
Eastern District of
Arkansas
Success Story

The Eastern View

Client Success Story - Martin DeHaven

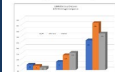
Wednesday, December 14, 2022



[Read more](#)

EDAR U.S. Probation and Pretrial Services Stats

Wednesday, December 14, 2022



[Read more](#)

U.S. Probation and Pretrial Services Eastern District of Arkansas



Career Opportunity - JVA#2025-02

United States Probation Officer

Position Type: Full Time Regular

Job Grade: CL(LEO) 25 to CL-28

Salary: CL (LEO) 25- \$50,927 - \$81,480
CL 27: \$59,133 - \$96,147
CL 28: \$70,894 - \$115,213
(Depending on qualifications and experience)

Open Date: March 19, 2025

Closing Date: Until Filled

Location: Little Rock and Helena

(actively recruiting to fill position in Little Rock, but office locations also in Jonesboro and West Helena)

**We serve the Federal Courts in the
Judicial or Third Branch of Government
separate from the Executive and
Legislative Branch. Our policies and
procedures are governed by the Judicial
Conference of the United States and local
court policy.**

(Qualified applicants [click here](#) to apply.)

POSITION OVERVIEW

The United States Probation and Pretrial Services, Eastern District of Arkansas, is seeking applicants for a U.S. Probation Officer.

This mission critical position will:

- supervise pretrial and post-conviction clients (Supervision Services)

The U.S. Probation Officer provides instructions and guidance to persons under supervision and provides oversight to ensure compliance with court-imposed conditions, directives, or guidelines. Irregular working hours, including weekend work, may be required to support the Court, defendants and offenders. In-state and out-of-state travel is required.

**FOR A FULL LIST OF DUTIES AND REQUIREMENTS, PLEASE READ THE
POSITION DESCRIPTION ON OUR [WEBSITE](#).**

[What does it mean to be a team member with U.S. Probation and Pretrial Services?](#)

[U.S. Probation Officer Medical Requirements](#)

[U.S. Probation Officer Duties](#)

[United States Courts Benefits](#)

EDUCATION AND PROFESSIONAL WORK EXPERIENCE REQUIREMENTS: All probation or pretrial services officer positions require completion of a bachelor's degree from an accredited college or university in a field of academic study such as criminal justice, criminology, psychology, counseling, social work/sociology, human relations, business or public administration, which provides evidence of the capacity to understand and apply the legal requirements and human relations skills involved in the position. An official transcript is required. The specialized experience requirements for each classification level are as follows.

CL 27 Experience Requirement: two years specialized experience including at least one-year equivalent to work at the CL-25 level or the completion of a master's degree in a field of study closely related to the position, or Juris Doctor (JD) degree to qualify at the CL-27 level.

CL 28 Experience Requirement: a minimum of two years of specialized experience, including at least one-year equivalent to work at the CL-27 level to qualify at the CL-28 level.

PREFERRED QUALIFICATIONS: Completion of an advanced degree from an accredited university is preferred. Additional preferred skills include fluency in a foreign language, proficiency in Microsoft Office, licensures or certification in a behavior science (LMSW, LCSW, CADC, LPC, etc.) or any other skills/licensure that are relevant to the duties of a probation officer.

Hktuv'ko g'cr r qkpvggu'vq'r qukkqpu'eqxgtgf 'wpf gt'rcy "gphqtego gpv'qhleg'tgvtgo gpv'r tqxkukqpu"
must not have reached their 37th birthday'cv'j g'ko g'qh'cr r qkpvo gpv0

Crr rdecpu'59'qt'qxgt'y j q'j cxg'**previous law enforcement officer experience under the Civil Service Retirement System or the Federal Employees' Retirement System** cpf 'y j q'
j cxg'gkj gt 'c'uidugs wgpv'dtgcni'kp'ugt'xleg'qt'kpvt'xgpkpi 'ugt'xleg'kp'c'pqp/rcy "gphqtego gpv"
qhleg't'r qukkqp"o c{ 'j cxg'vj gk't'r t'gxlqwu'rcy "gphqtego gpv'gzt'gt'kepeg'uidvtcevgf 'ltqo 'vj g'ci g"
vq'f'gvtgo kpg'y j gvj gt'vj g{ 'o gg'vj g'o czko wo 'ci g'tgs'vktgo gpv0

Applications will be reviewed when submitted.

(Qualified applicants [click here](#) to apply.)

The Eastern District of Arkansas U.S. Probation and Pretrial Services Office reserves the right to modify or withdraw this vacancy announcement, or to fill the position any time before the closing date, any of which may occur without prior written or other notice.